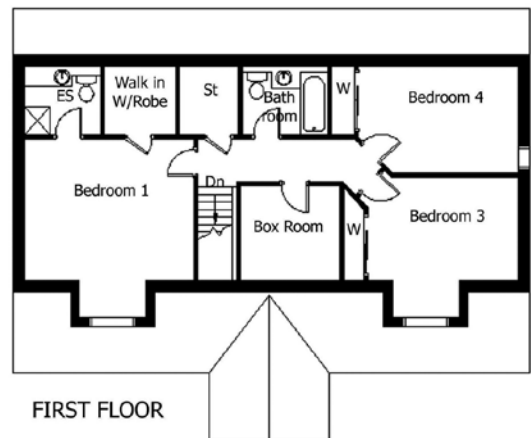
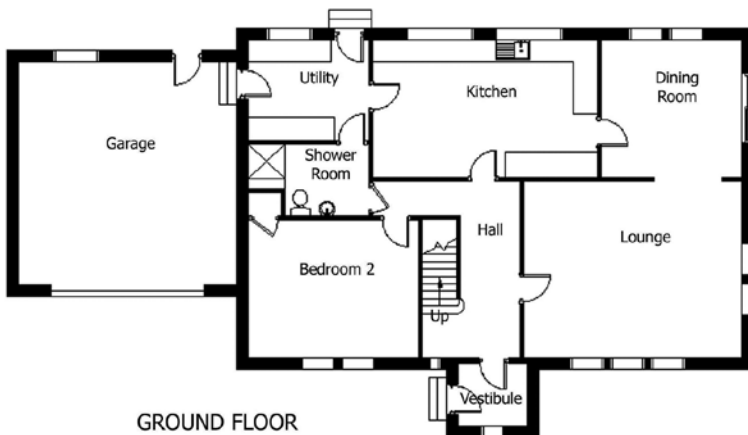


# CARRICK HOUSE TYPE

1 1/2 House • 5 Bedrooms



For illustrative purposes only. Not to scale.  
Plan indicates property layout only.



Carrick	Metres	Feet	Carrick	Metres	Feet	Floor Area: 194m <sup>2</sup> Frontage: 13.8m Depth: 10.7m Ridge Height: 7.8m
Lounge	5.8 x 4.7	19'0" x 15'5"	Bedroom 3	4.0 x 2.8	13'1" x 9'2"	
Dining	3.7 x 3.5	12'1" x 11'6"	Bedroom 4	4.2 x 2.8	13'9" x 9'2"	
Kitchen	5.9 x 3.5	19'4" x 11'6"	Boxroom	2.6 x 2.2	8'6" x 7'2"	
Utility	3.2 x 2.7	10'6" x 8'10"	Bathroom	2.2 x 1.8	7'2" x 5'11"	
Bedroom 1	4.5 x 3.8	14'9" x 12'5"	Shower Room	3.2 x 1.9	10'6" x 6'2"	
Bedroom 2	4.5 x 3.5	14'9" x 11'6"	En-suite	2.0 x 1.8	6'7" x 5'11"	

The information on this leaflet is for guidance only and does not constitute an offer or form any part of any contract.