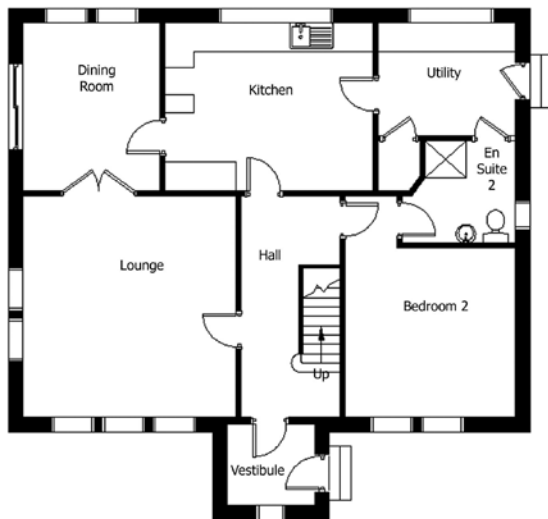


# CONNIGLEN HOUSE TYPE

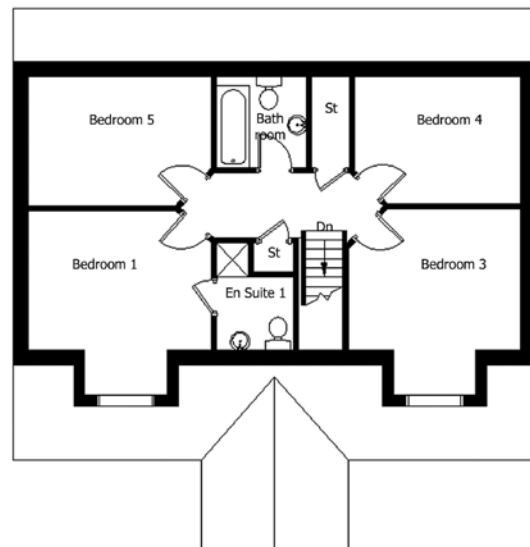
1 1/2 House • 5 Bedrooms



For illustrative purposes only. Not to scale.  
Plan indicates property layout only.



GROUND FLOOR



FIRST FLOOR

Conniglen	Metres	Feet	Conniglen	Metres	Feet	Floor Area: 156m <sup>2</sup> Frontage: 11.1m Depth: 10.8m Ridge Height: 7.9m
Lounge	4.5 x 4.7	14'9" x 15'5"	Bedroom 2	3.6 x 3.6	11'10" x 11'10"	
Dining	2.9 x 3.5	9'6" x 11'6"	Bedroom 3	3.6 x 3.0	11'10" x 9'10"	
Kitchen	4.3 x 3.5	14'1" x 11'6"	Bedroom 4	3.5 x 2.7	11'6" x 8'10"	
Utility	2.9 x 2.4	9'6" x 7'10"	Bedroom 5	3.9 x 2.7	12'9" x 8'10"	
Bathroom	1.9 x 1.9	6'2" x 6'2"	En-suite 1	1.6 x 2.2	5'3" x 7'2"	
Bedroom 1	3.9 x 3.0	12'9" x 9'10"	En-suite 2	2.4 x 2.1	7'10" x 6'10"	

The information on this leaflet is for guidance only and does not constitute an offer or form any part of any contract.