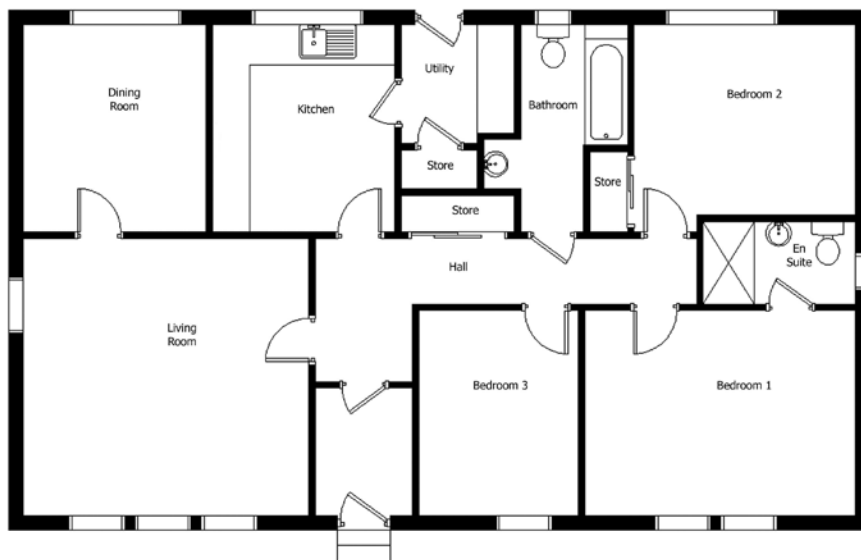


DOUGLAS HOUSE TYPE

Bungalow • 3 Bedrooms



For illustrative purposes only. Not to scale.
Plan indicates property layout only.



Douglas	Metres	Feet	Douglas	Metres	Feet	Floor Area: 103m2 Frontage: 13.8m Depth: 8.4m Ridge Height: 6.4m
Lounge	4.5 x 4.4	14'9" x 14'5"	Bedroom 1	4.2 x 3.2	14'1" x 10'6"	
Dining	2.8 x 3.2	9'2" x 10'6"	Bedroom 2	3.5 x 3.0	11'6" x 9'10"	
Kitchen	2.9 x 3.2	9'6" x 10'6"	Bedroom 3	2.5 x 3.2	8'2" x 10'6"	
Utility	1.8 x 1.8	5'11" x 5'11"	En-suite	2.3 x 1.3	7'6" x 4'3"	
Bathroom	1.7 x 3.2	5'7" x 10'6"				

The information on this leaflet is for guidance only and does not constitute an offer or form any part of any contract.