

KAMES HOUSE TYPE

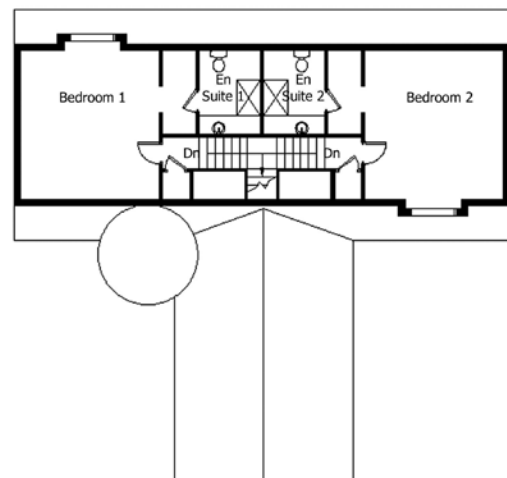
1 1/2 House • 4 Bedrooms



For illustrative purposes only. Not to scale.
Plan indicates property layout only.



GROUND FLOOR



FIRST FLOOR

Kames	Metres	Feet	Kames	Metres	Feet	Floor Area: 247m2 Frontage: 16.8m Depth: 15.7m Ridge Height: 7.1m
Lounge	5.4 x 6.1	17'8" x 20'0"	Bedroom 3	5.7 x 3.6	18'8" x 11'10"	
Kitchen /Dining	5.6 x 6.6	18'4" x 21'8"	Bedroom 4	4.5 x 3.2	14'9" x 10'6"	
Utility	3.9 x 2.6	12'10" x 8'6"	En-suite 1	2.0 x 2.7	6'6" x 8'10"	
Shower Room	2.5 x 1.4	8'2" x 4'7"	En-suite 2	2.0 x 2.7	6'6" x 8'10"	
Bedroom 1	4.6 x 4.8	15'1" x 15'9"	En-suite 3	2.2 x 1.5	7'2" x 4'11"	
Bedroom 2	4.6 x 4.8	15'1" x 15'9"	En-suite 4	2.2 x 1.5	7'2" x 4'11"	

The information on this leaflet is for guidance only and does not constitute an offer or form any part of any contract.