

DETACHED NEW BUILD , DALINTOBER, CAMPBELTOWN

FIXED PRICE OF £330,000

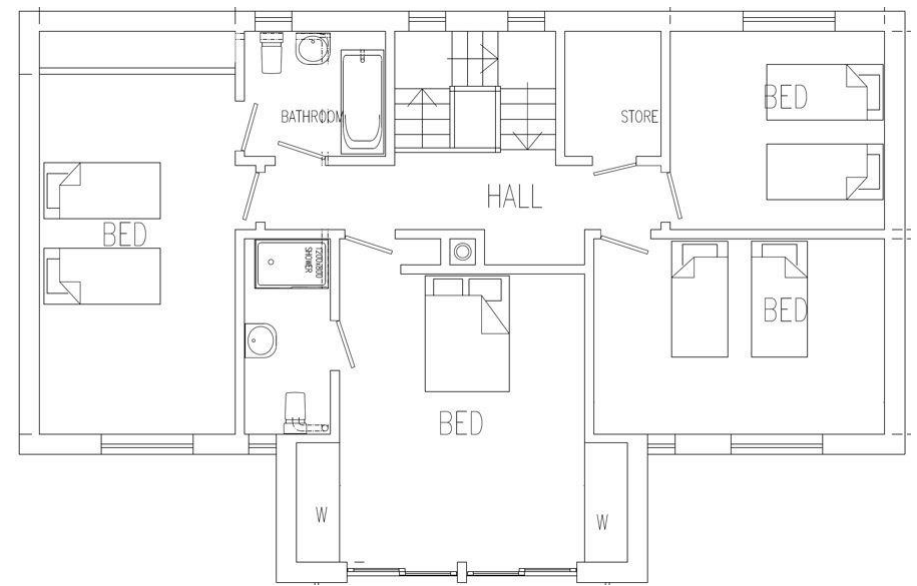
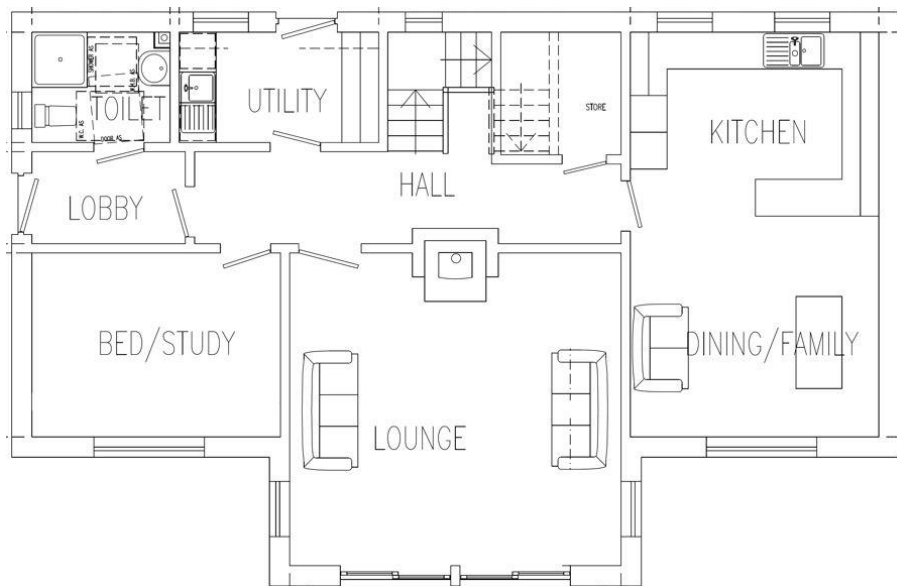


This splendid 4 bedroomed, premier DETACHED VILLA offers the ultimate in luxury living with panoramic views across the town, loch and harbour. Spacious throughout, the accommodation has been designed to a superior standard of specification and comprises hall, lounge, Kitchen on open plan with dining room, utility room, study/5th bedroom and wc with an attractive staircase leading to the upper hall accessing the family bathroom and four bright airy bedrooms, the master bedroom having an en-suite shower room. A garage is available as an optional extra.

This very attractive development also offers a choice of 3 & 4 bedroomed property styles, further information on which can be obtained by contacting the selling agents.

<i>Hallway</i>		<i>Lounge</i>	<i>5.04m x 5.01m</i>	<i>WC</i>	
<i>Kitchen/Dining Room</i>	<i>6.06m x 4.00m</i>	<i>Utility Room</i>		<i>Study / Bedroom 5</i>	<i>4.00m x 3.00m</i>
<i>Bedroom 1</i>	<i>5.90m x 3.02m</i>	<i>Bedroom 2</i>	<i>4.07m x 4.00m</i>	<i>Bedroom 3</i>	<i>4.07m x 3.02m</i>
<i>Bedroom 4</i>	<i>3.05m x 3.02m</i>	<i>En-Suite Shower Room</i>		<i>Bathroom</i>	<i>3.34m x 1.52m</i>

Floorplans



NOTE: the seller will accept the first unconditional legal offer of that amount. It is important, therefore, that interested parties who wish to proceed further should register their interest with the selling agents. As the price is fixed the seller will not be obliged to proceed to a closing date and the option is reserved to sell the property to any party or to withdraw same from the market at any time.

These particulars have been carefully prepared after due enquiry, are provided as a guide only, but do not form part of any contract. Measurements have been taken by a sonic tape machine. While the agents consider that information and opinions expressed are fair and accurate, interested parties must not rely upon any statement, whether oral or written, made by the agents. *Please note the floor plans are for information only and not to scale.*