

NOT TRUE REPRESENTATION OF FINAL BUILD, THIS BROCHURE DOES NOT FORM PART OF A LEGAL CONTRACT, FOR INFORMATION ONLY, DESIGN/LAYOUT SUBJECT TO CHANGE

Minard

Minard, Argyll

- 2&3 Bedroom Semi-detached
- Lounge, Kitchen/dining
- Bathroom and ensuite
- Double glazing
- Air Source Heating

Prices from: £165,000

Consisting of 2 semi-detached single and 2 semi-detached double storey dwellings. This small development will be pleasing extension to Vitoria Park, an attractive residential area set in the picturesque lochside village of Minard.

These 2&3 bedroom properties include high insulation, double glazing, Air-source heating and 10-year NHBC guarantee. Prospective purchasers will have a choice of kitchen doors and worktops. Oven, hob and extractor are included in the sale. The accommodation comprises of Kitchen/dining, lounge, bedrooms, toilet and bathroom.

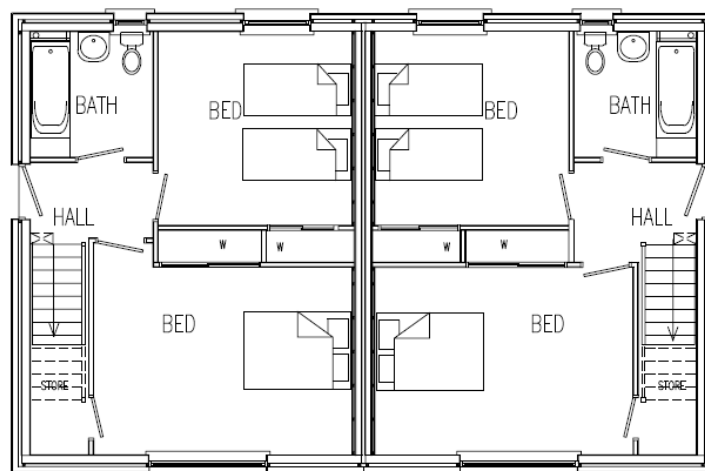
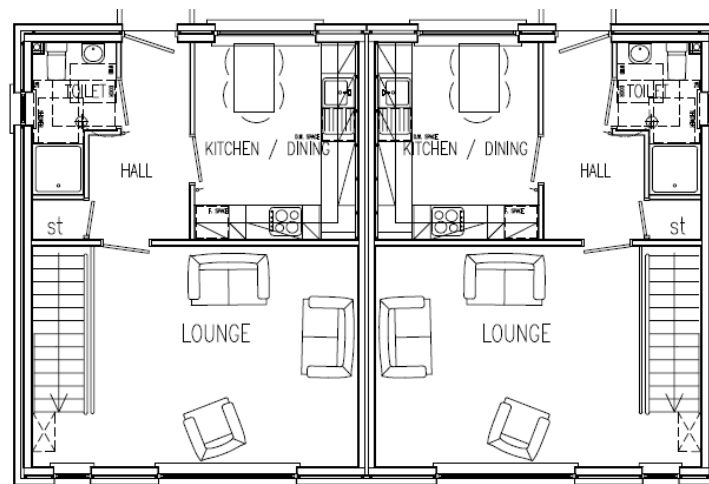
Minard is situated midway between the royal Burgh of Inverary (12 miles to the North) and the town of Lochgilphead (12 miles further South). Both towns boast numerous hotels, specialist shops and grocery stores, swimming pools, supermarkets and Lochgilphead has a hospital and newly built multi-campus school.

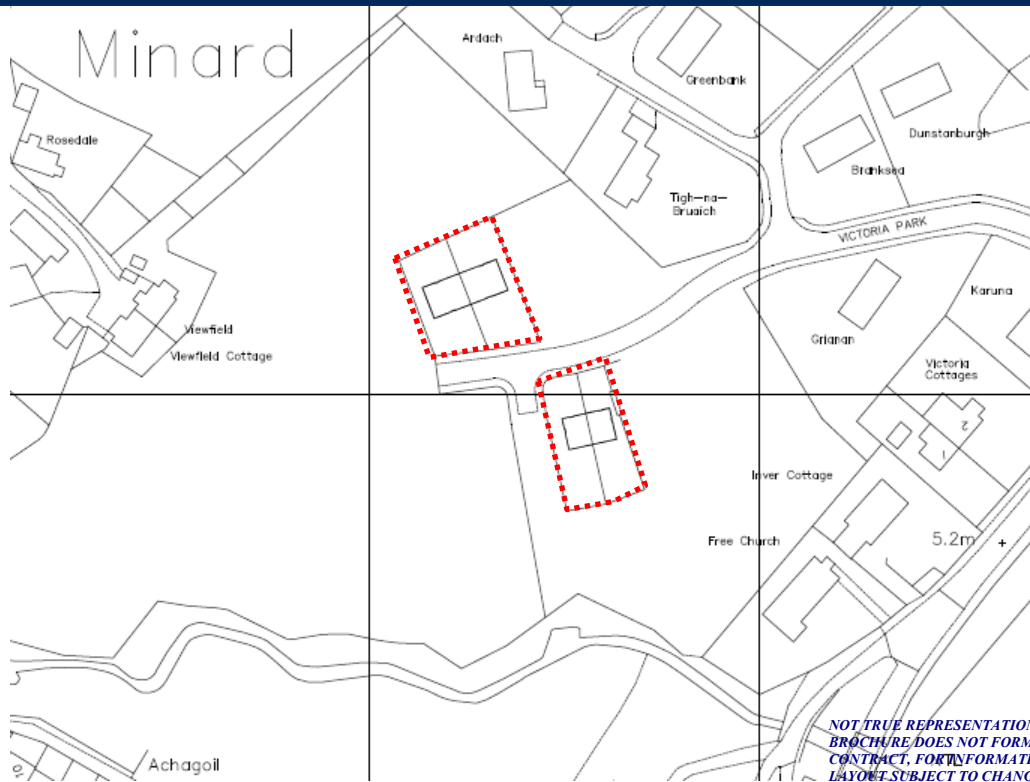


Type 1—Bungalow



Type 2 - 2 Storey





Directions

Approaching the village of Minard from the north (Inveraray), turn into Victoria Park, then take your first left and follow the road around until you come to an Argyll4Sale sign.



Argyll4sale
10 Argyll Street
Lochgilhead, Argyll
PA31 8LZ

enquiry@argyll4sale.net
Tele: +44 (0) 1546 603118
Fax: +44 (0) 1546 603733
www.argyll4sale.net

