

KILMORY PARK Industrial Unit

MACLEOD

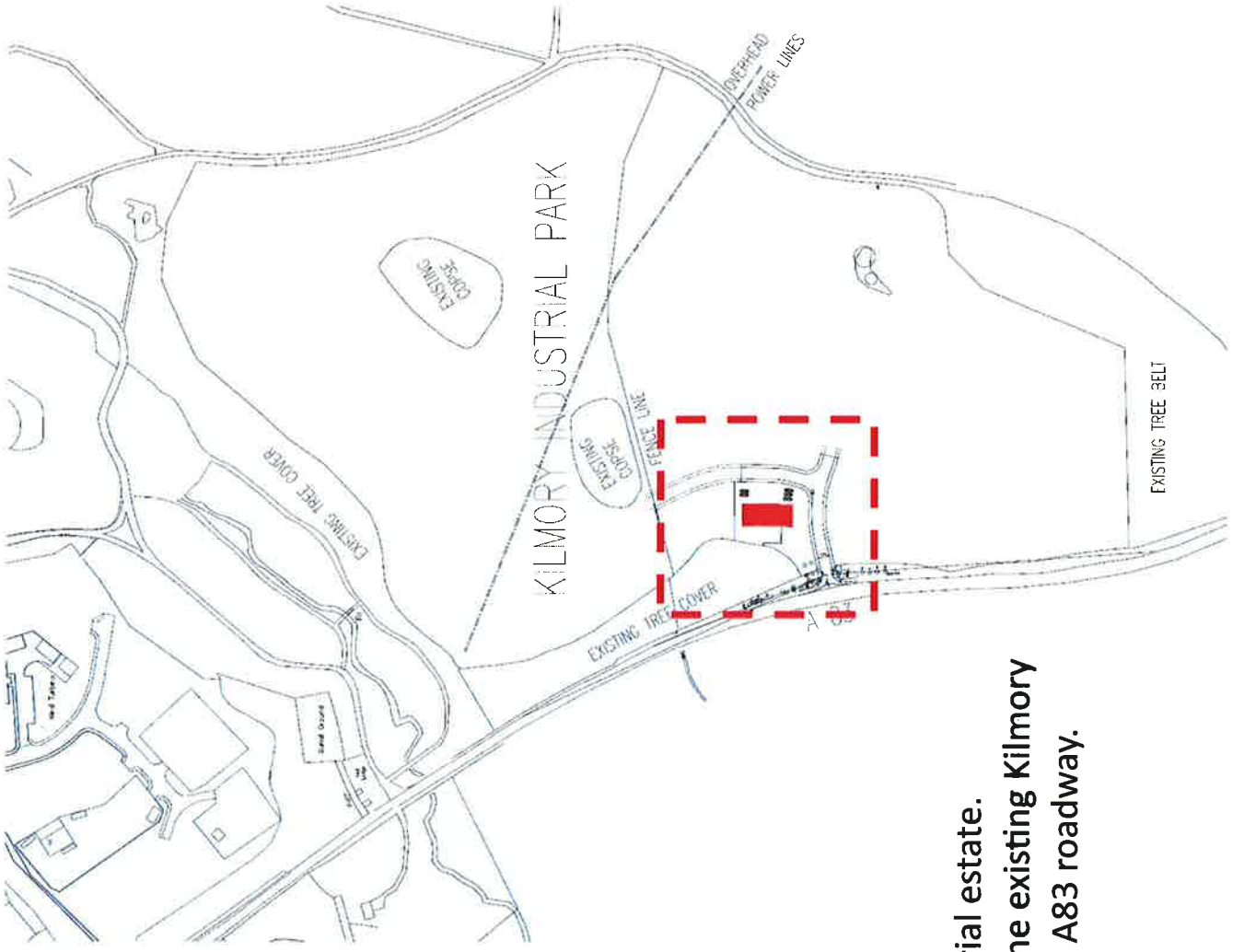
MACLEOD CONSTRUCTION LIMITED



No 1 Kilmory Park, 500sqm Light Industrial Unit

Kilmory Industrial Estate, Lochgilphead

LOCATION PLAN



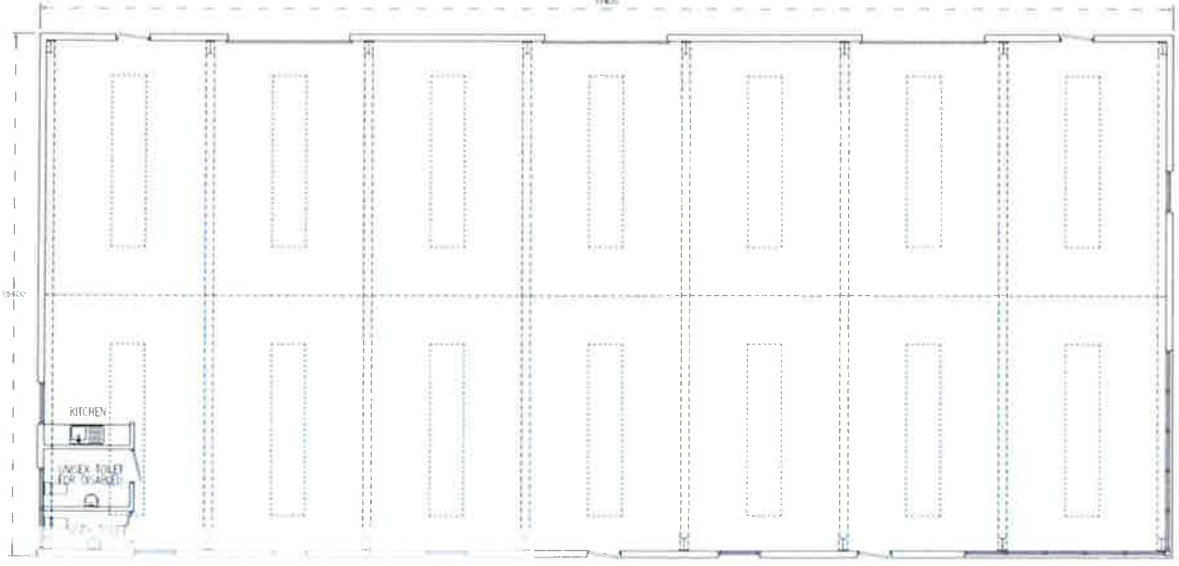
Unit 1 is located within the new Kilmory Park Industrial estate. The new industrial estate is located to the south of the existing Kilmory industrial estate and is accessed via direct link to the A83 roadway.

Unit 1 Kilmory Park

SITE PLAN/LAYOUT



- Info:**
- 500sqm
 - 15m x 34m



Unit 1 Kilmory Park

Unit 1, Kilmory Park

Kilmory Park Industrial Estate

Unit 1 is a medium sized light industrial unit located within the new Kilmory Park Industrial estate. This will be the flagship development for the new industrial estate and will benefit from very easy access to the A83 while the existing tree belt will provide adequate noise screening and privacy. Its excellent location offers a prime location for any business.

- 500sqm
- 17 Parking spaces
- Large open space
- WC and small kitchen facilities
- Large roller access doors
- Glazed display area
- Class 5, Light Industrial
- Easy access to A83 roadway

PRICES FROM: TBC

Please call to confirm details.



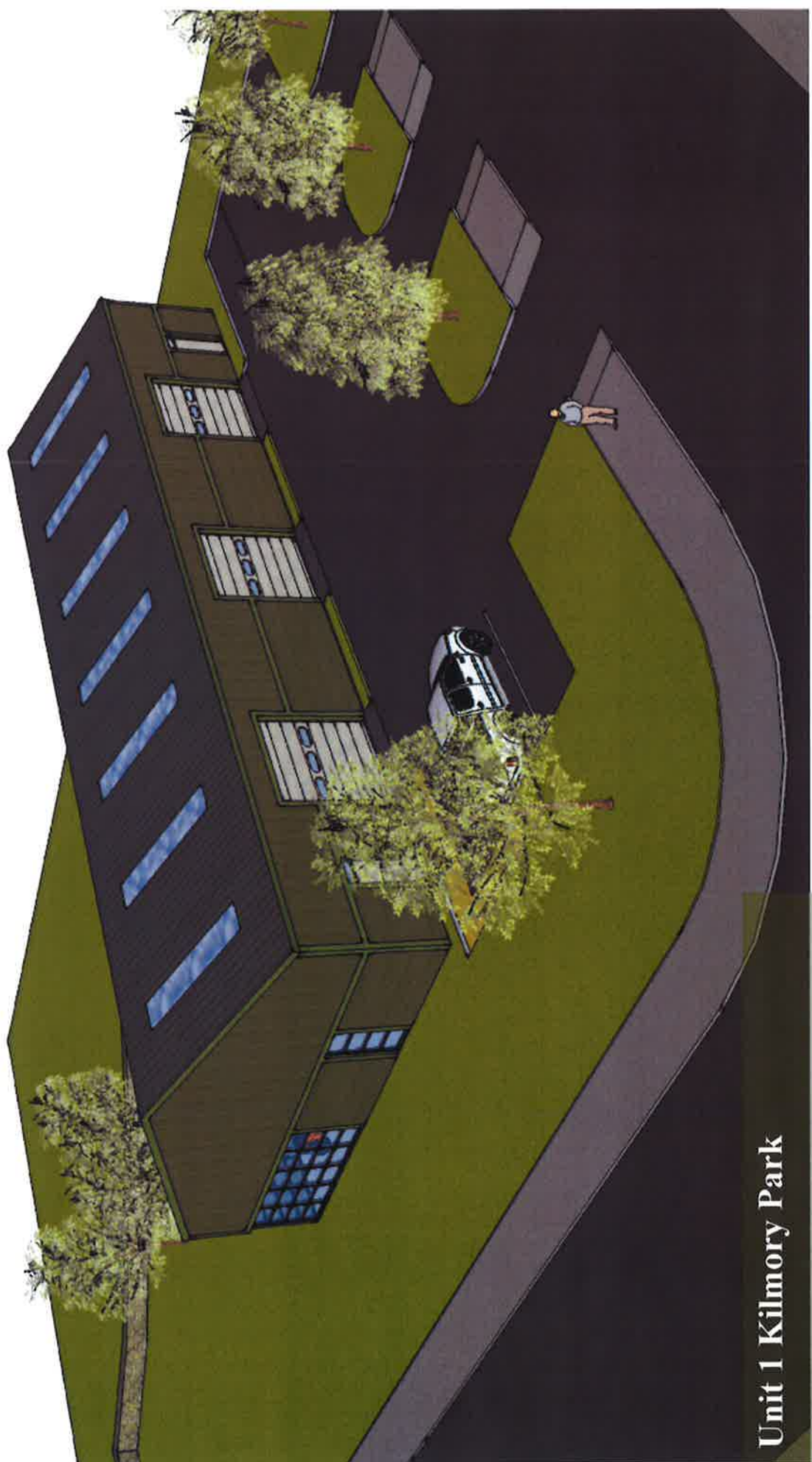
MACLEOD

MACLEOD CONSTRUCTION LIMITED

MacLeod Construction Ltd
Kilmory Industrial Estate
Lochgilphead,
Argyll, PA31 8RR
Co. Reg. No. 165362 (Scotland)

M&K MacLeod Ltd
Kilmory Industrial Estate
Lochgilphead,
Argyll, PA31 8RR
Co. Reg. No. 57043 (Scotland)

Email: sales@mkmacleod.co.uk
Telephone Number: (01546) 602989
Fax Number: (01546) 603789



Unit 1 Kilmorey Park



Unit 1 Kilmory Park

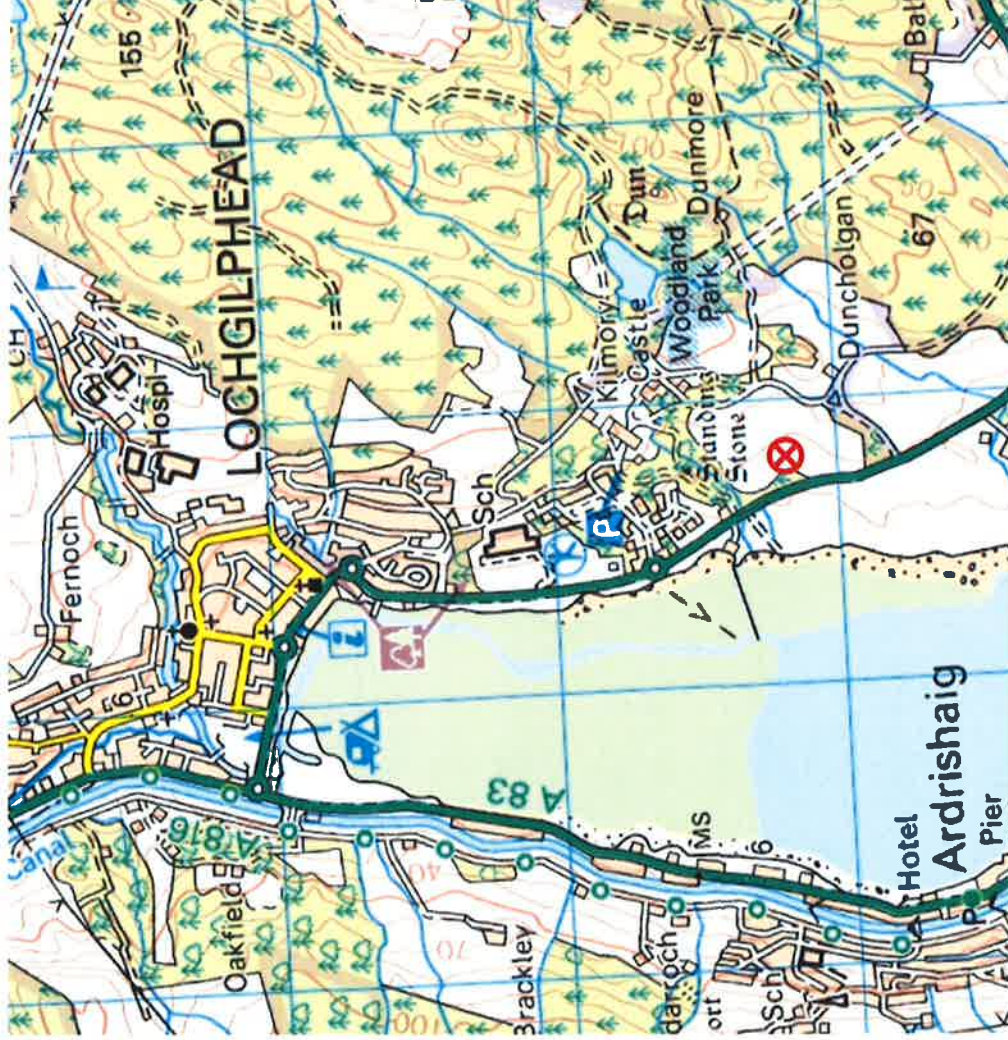


Unit 1 Kilmory Park

Directions – Kilmory Park Industrial Estate, Kilmory, Lochgilphead, PA31 8RR

Heading along the A83 from Lochgilphead towards Glasgow, the New industrial will be on your left just under 1/2 mile to the south of the existing Kilmory industrial estate entrance.

The unit 1 is the first development on the left when entering the new industrial estate.



Important Notice

We make every reasonable effort to ensure that the particulars set out in the document are correct, however no warranty or guarantee is given and the tenant should not rely upon them as statements or representations of fact. The tenant should satisfy themselves as to the structural condition of any buildings or other erections and the state of repair of any services, appliances, equipment or facilities. Macleod Construction Ltd/M&K Macleod Ltd or its directors or employees do not assume responsibility.

UNIT 1, Kilmory Park Industrial Estate



Email: sales@mkmacleod.co.uk
Telephone Number: (01546) 602989
Fax Number: (01546) 603789