

CONNIGLEN HOUSE DESIGN



FROM SELF BUILD TIMBER KIT TO A NEW HOME

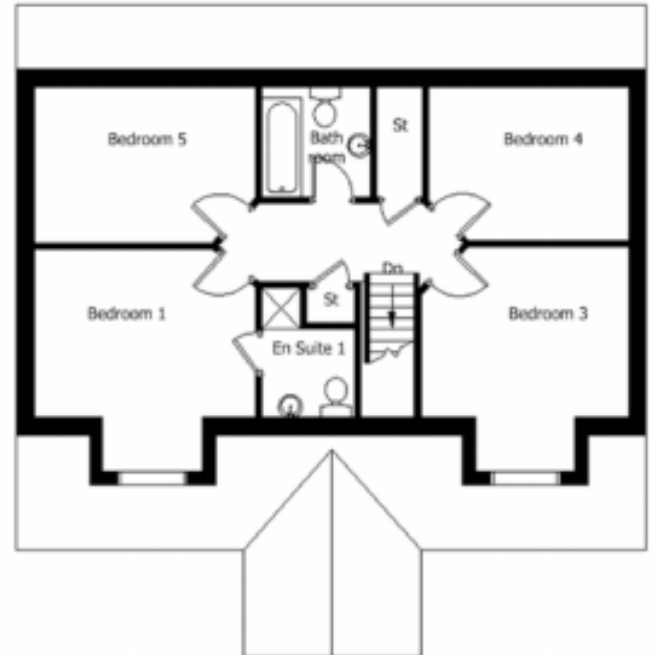
If you're looking at self build houses then a timber frame kit offers a great way of keeping costs reasonable and the process as quick as possible. We are the largest timber frame design and manufacturing company in the area, for self build projects.

- ✓ NHBC GUARANTEE
- ✓ ECO-FRIENDLY HEATING
- ✓ FIVE BEDROOMS
- ✓ DOUBLE ENSUITES

GROUND FLOOR



FIRST FLOOR



Conniglen	Metres	Feet	Conniglen	Metres	Feet	
Lounge	4.5 x 4.7	14'9" x 15'5"	Bedroom 3	3.6 x 3.0	11'10" x 9'10"	Floor Area 156m ²
Dining	2.9 x 3.5	9'6" x 11.6"	Bedroom 4	3.5 x 2.7	11'6" x 1'10"	Frontage 11.1m
Kitchen	4.3 x 3.5	14'1" x 11.6"	Bedroom 5	3.9 x 2.7	12'9" x 8'10"	Depth 10.8m
Utility	2.9 x 2.4	9'6" x 7'10"	En-Suite 1	1.6 x 2.2	5'3" x 7'2"	Ridge Height 7.9m
Bathroom	1.9 x 1.9	6'2" x 6'2"	En-Suite 2	2.4 x 2.1	7'10" x 6'10"	
Bedroom 1	3.9 x 3.0	12'9" x 9'10"				
Bedroom 2	3.6 x 3.6	11'10" x 11'10"				

This beautiful 5 bedroom home could be yours.

MACLEOD
CONSTRUCTION LIMITED