

## ILE HOUSE DESIGN

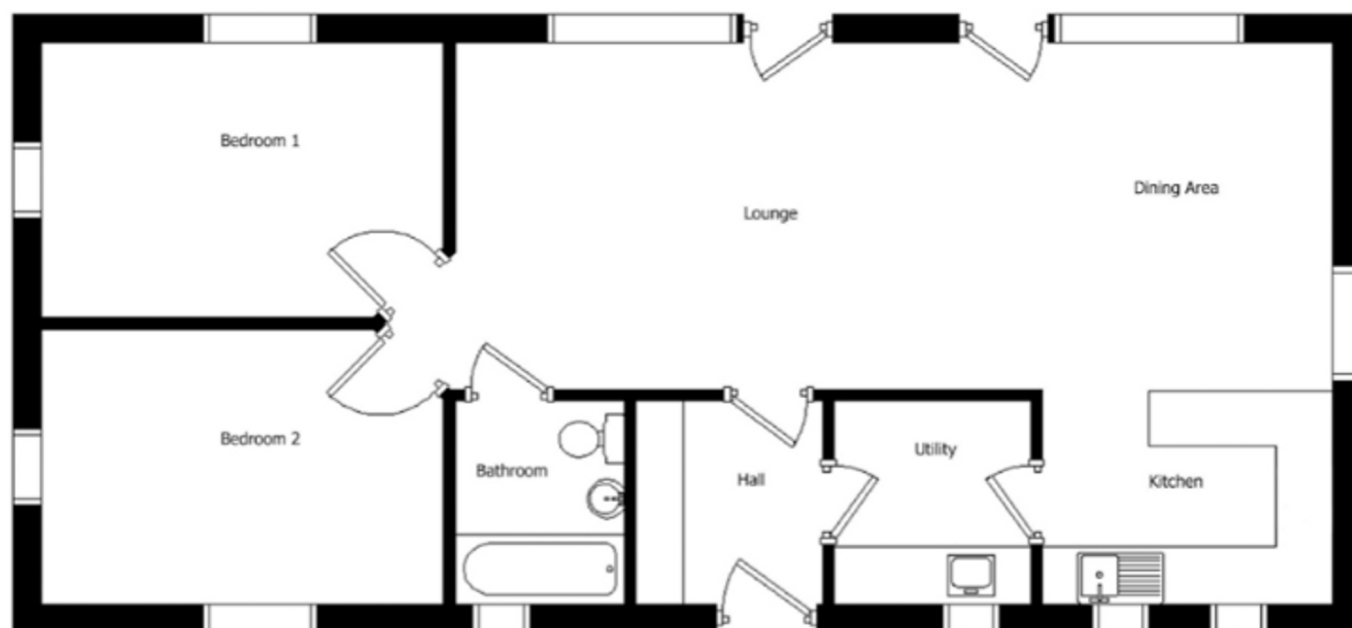


## FROM SELF BUILD TIMBER KIT TO NEW HOME

If you're looking at self build houses - then a timber frame kit offers a great way of keeping costs reasonable and the process as quick as possible. We are the largest timber frame design and manufacturing company in the area, for self build projects.

- ✓ NHBC GUARANTEE
- ✓ TWO BEDROOMS
- ✓ ECO-FRIENDLY HEATING

## FLOOR LAYOUT



Ile	Metres	Feet	Ile	Metres	Feet	
<b>Lounge/ Dining</b>	9.2 x 3.7	30'2" x 12'1"	<b>Bathroom</b>	1.8 x 2.1	5'11" x 6'11"	<b>Floor Area</b> 82m <sup>2</sup>
<b>Kitchen</b>	3.0 x 2.1	9'10" x 6'10"	<b>Bedroom 1</b>	4.2 x 2.9	13'6" x 9'6"	<b>Frontage</b> 14.2m
<b>Utility</b>	2.1 x 2.1	6'10" x 6'10"	<b>Bedroom 2</b>	4.2 x 2.9	13'6" x 9'6"	<b>Depth</b> 6.5m
						<b>Ridge Height</b> 5.5m

This beautiful 2 bedroom cottage could be yours.

**MACLEOD**  
CONSTRUCTION LIMITED