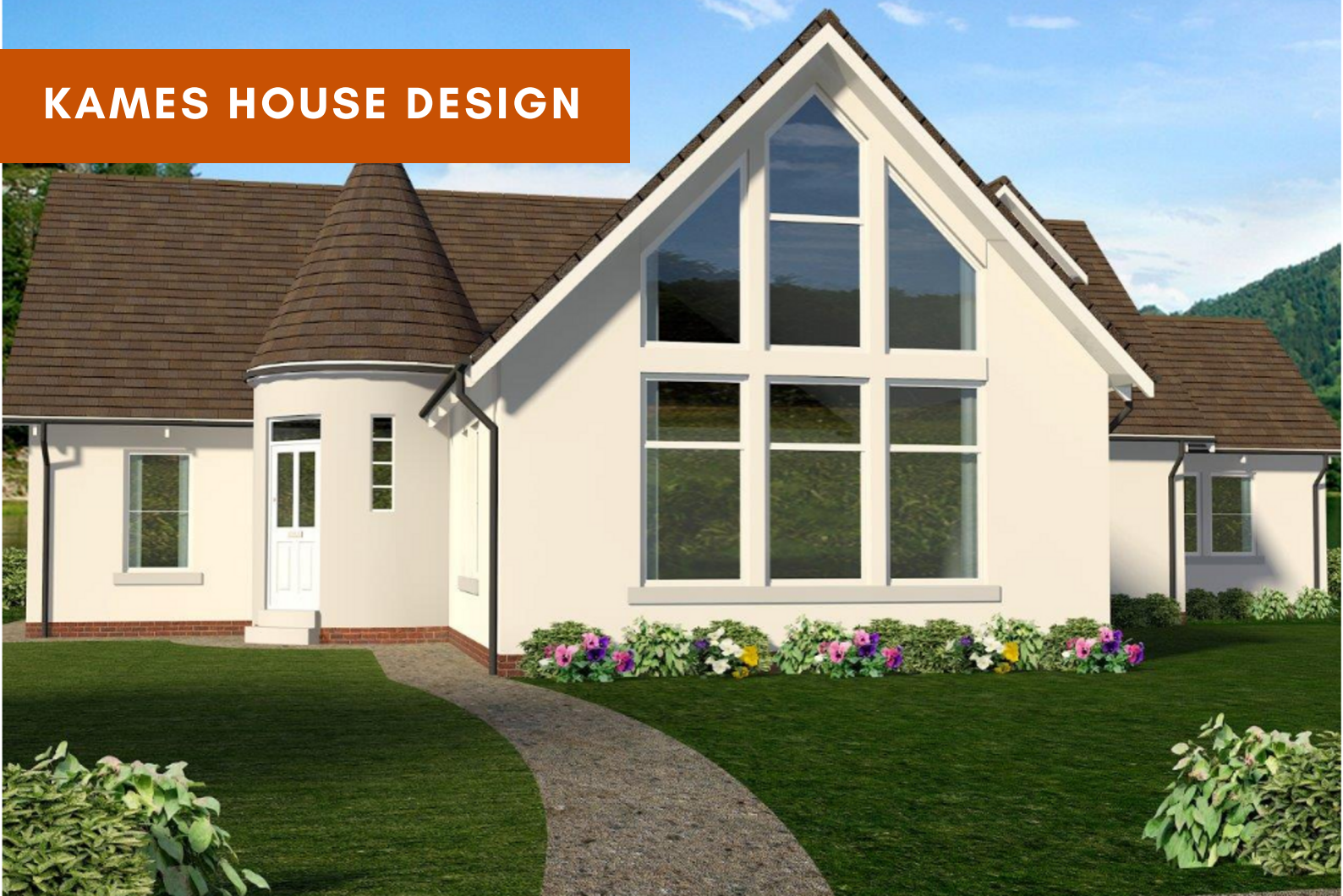


KAMES HOUSE DESIGN



FROM SELF BUILD TIMBER KIT TO NEW HOME

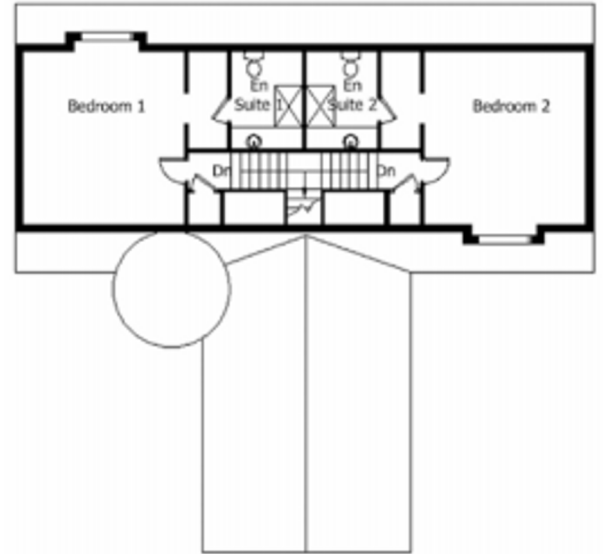
If you're looking at self build houses – then a timber frame kit offers a great way of keeping costs reasonable and the process as quick as possible. We are the largest timber frame design and manufacturing company in the area, for self build projects.

- ✓ NHBC GUARANTEE
- ✓ ECO-FRIENDLY HEATING
- ✓ FOUR BEDROOMS
- ✓ DOUBLE ENSUITE
- ✓ CAR GARAGE

GROUND FLOOR



FIRST FLOOR



Kames	Metres	Feet	Kames	Metres	Feet	
Lounge	5.4 x 6.1	17'8" x 20'0"	Bedroom 3	5.7 x 3.6	18'8" x 11'10"	Floor Area 247m ²
Kitchen/ Dining	5.6 x 6.6	18'4" x 21'8"	Bedroom 4	4.5 x 3.2	14'9" x 10'6"	Frontage 16.8m
Utility	3.9 x 2.6	12'10" x 8'6"	En-Suite 1	2.0 x 2.7	6'6" x 8'10"	Depth 15.7m
Shower Room	2.5 x 1.4	8'2" x 4'7"	En-Suite 2	2.0 x 2.7	6'6" x 8'10"	Ridge Height 7.1m
Bedroom 1	4.6 x 4.8	15'1" x 15'9"	En-Suite 3	2.2 x 1.5	7'2" x 4'11"	
Bedroom 2	4.6 x 4.8	15'1" x 15'9"	En-Suite 4	2.2 x 1.5	7'2" x 4'11"	

This beautiful 4 bedroom home could be yours.

MACLEOD
CONSTRUCTION LIMITED