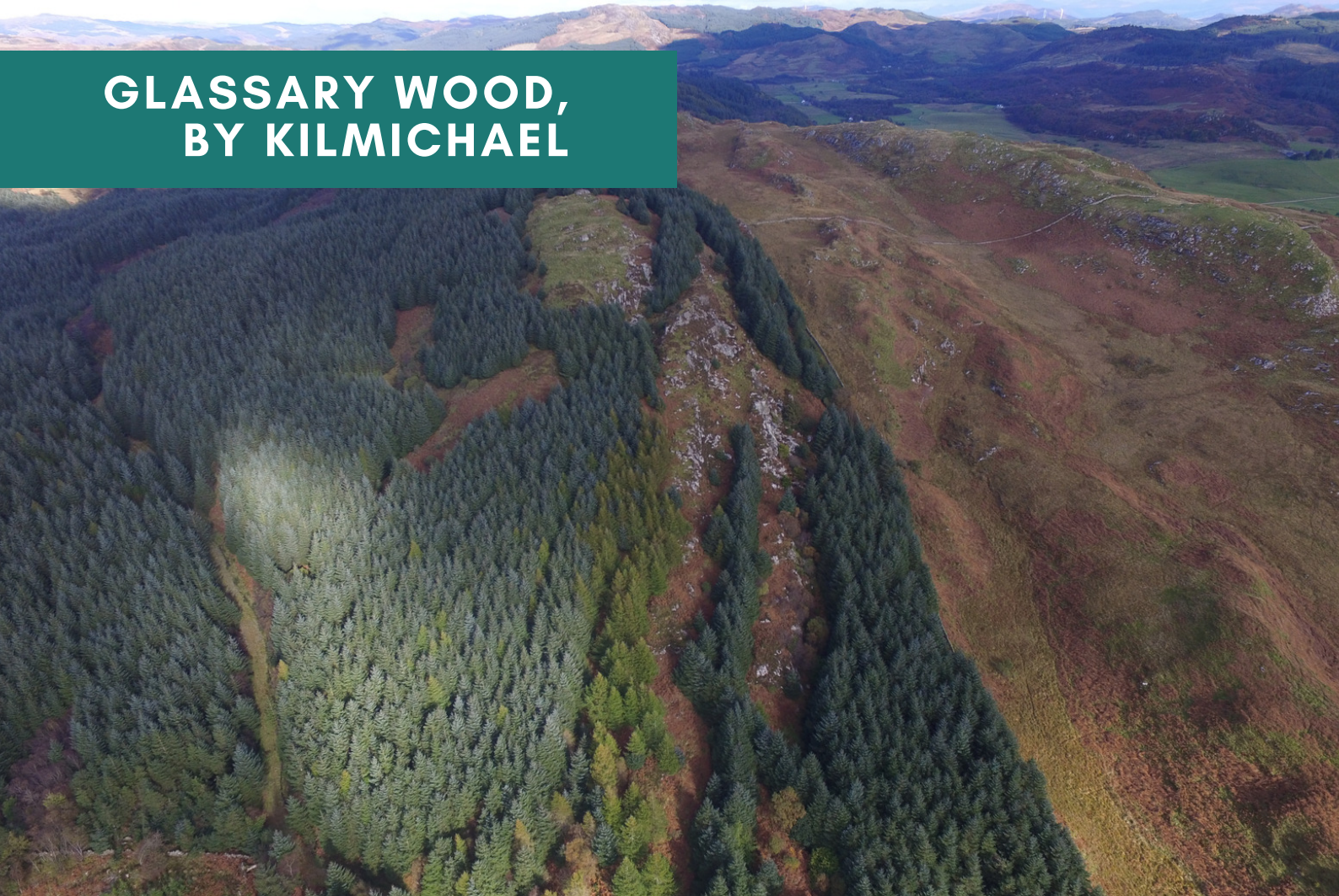


GLASSARY WOOD, BY KILMICHAEL



HOUSES FOR SALE

Glassary Wood stands in an attractive area in Mid Argyll, which is famous for it's superb views and the number of impressive historic sites. The area is also within a fairly close proximity to larger towns such as Lochgilphead and Oban which have a number of supermarkets and convenience stores.

- ✓ ECO HAMLET DEVELOPMENT
- ✓ SECLUDED LOCATION
- ✓ NHBC GUARANTEE

4 Bed Property Glassary Wood by Kilmicheal PA31 8WH



Eco-friendly house designed for the Glassary Wood location
features include:

- 4 Bedrooms
- 1 Bathroom & 1 en-suite
- Open plan kitchen, dining, living area
- Quiet secluded location
- Renewable air-source heating technology
- Double glazed windows
- High levels of thermal Insulation
- South-west facing windows to optimise thermal gain
- NHBC 10-year guarentee

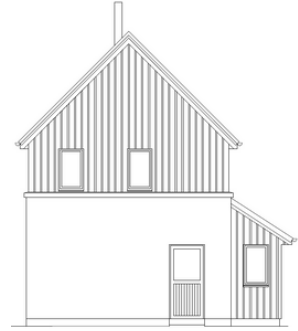
Price: POA

Please call to confirm details.

NORTH ELEVATION



EAST ELEVATION



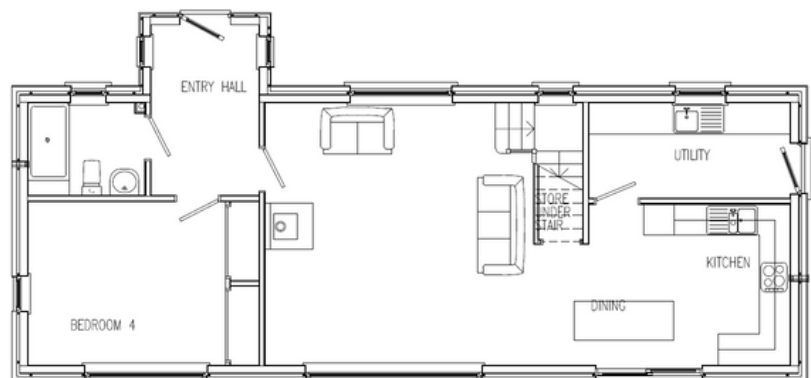
SOUTH ELEVATION



WEST ELEVATION



GROUND FLOOR



FIRST FLOOR



Please Note: These elevations & plans are for illustrative purposes only. Not to scale.

OS MAP



View of development & plots



Surrounding area.



Surrounding area.

Interested in Glassary Wood?
Call us or email us.

01546 602989
Sales@mkmacleod.co.uk

MACLEOD
CONSTRUCTION LIMITED

ABOUT US

Twin brothers Murdo and Kenny MacLeod founded the business in 1975. Now, over 45 years later, our factory in Lochgilphead produces kits for residential and commercial properties of every size, shape and type. Our expertise goes beyond being builders and timber kit specialists – and into UPVC double-glazing, conservatories and much more.



WWW.MACLEODCONSTRUCTION.CO.UK