

# Glassary Woods, Kilmichael

**MACLEOD**  
CONSTRUCTION LIMITED



**Plots 2-5 Glassary Woods, Kilmichael**  
4 Bedroom Homes

# Glassary Woods, Kilmichael

Housing options:

**Plot 2 : 4bed 2 storey**

**Plot 3-5 : awaiting release**

Glassary Wood stands in an attractive area in Mid Argyll, which is famous for it's superb views and the number of impressive historic sites. The area is also within a fairly close proximity to larger towns such as Lochgilphead and Oban which have a number of supermarkets and confidence stores.



*Illustrations for marketing purposes only. Actual design, materials and dimensions may differ.*

Email: [sales@mkmacleod.co.uk](mailto:sales@mkmacleod.co.uk)  
Telephone Number: (01546) 602989

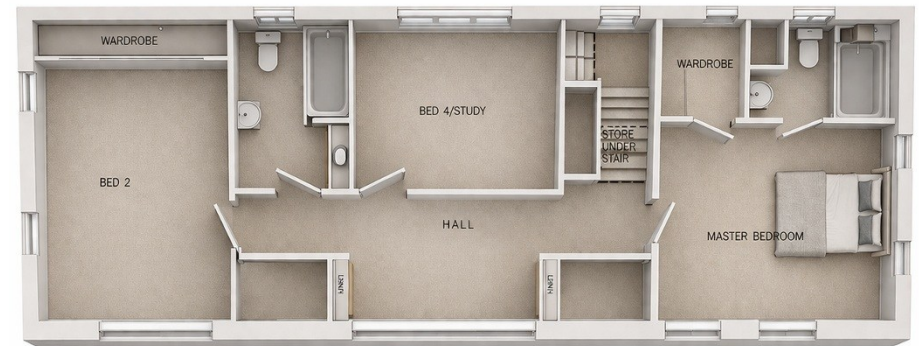
[WWW.MACLEODCONSTRUCTION.CO.UK](http://WWW.MACLEODCONSTRUCTION.CO.UK)

**MACLEOD**  
CONSTRUCTION LIMITED



# Glassary Woods, Kilmichael

## Plot 2 - 4 bedroom



*Illustrations for marketing purposes only. Actual design, materials and dimensions may differ.*

*Example floor plan, final design may differ.*

Email: [sales@mkmacleod.co.uk](mailto:sales@mkmacleod.co.uk)  
Telephone Number: (01546) 602989

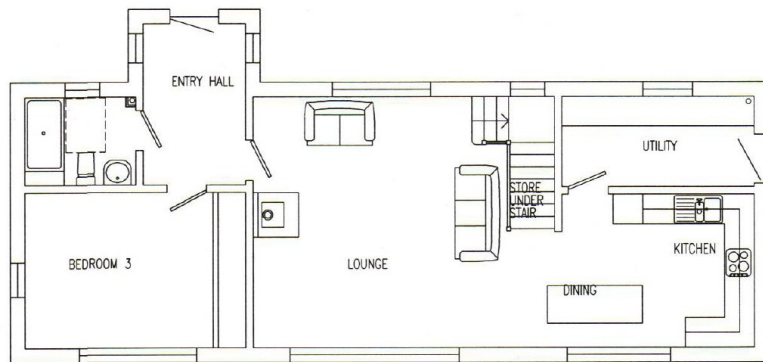
[WWW.MACLEODCONSTRUCTION.CO.UK](http://WWW.MACLEODCONSTRUCTION.CO.UK)

**MACLEOD**  
CONSTRUCTION LIMITED

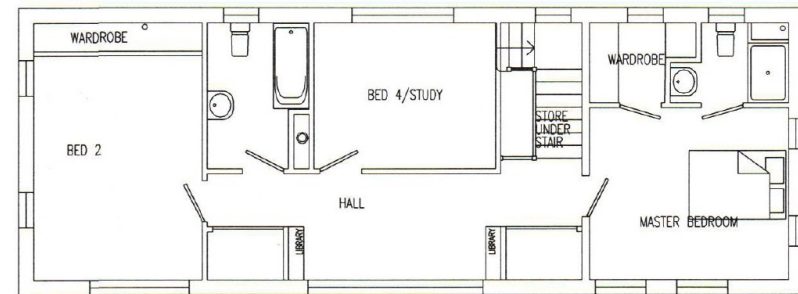
# Glassary Woods, Kilmichael

## Plot 2 — 4 bedroom

- Approximately 154m<sup>2</sup>
- 4 Bedroom
- Generous open plan living dining and kitchen
- Wood stove
- Large Utility room
- Potential study room (bed 4)
- Family bathroom, Master ensuite & shower room
- Optional garage
- Renewable air-source heating technology (zero direct emissions)
- Double glazed windows and high levels of thermal insulation
- NHBC guarantee
- EV charging point



GROUND FLOOR PLAN



FIRST FLOOR PLAN

*Example floor plan, final design may differ.*

*Illustrations for marketing purposes only. Actual design, materials and dimensions may differ.*

Email: [sales@mkmacleod.co.uk](mailto:sales@mkmacleod.co.uk)  
Telephone Number: (01546) 602989

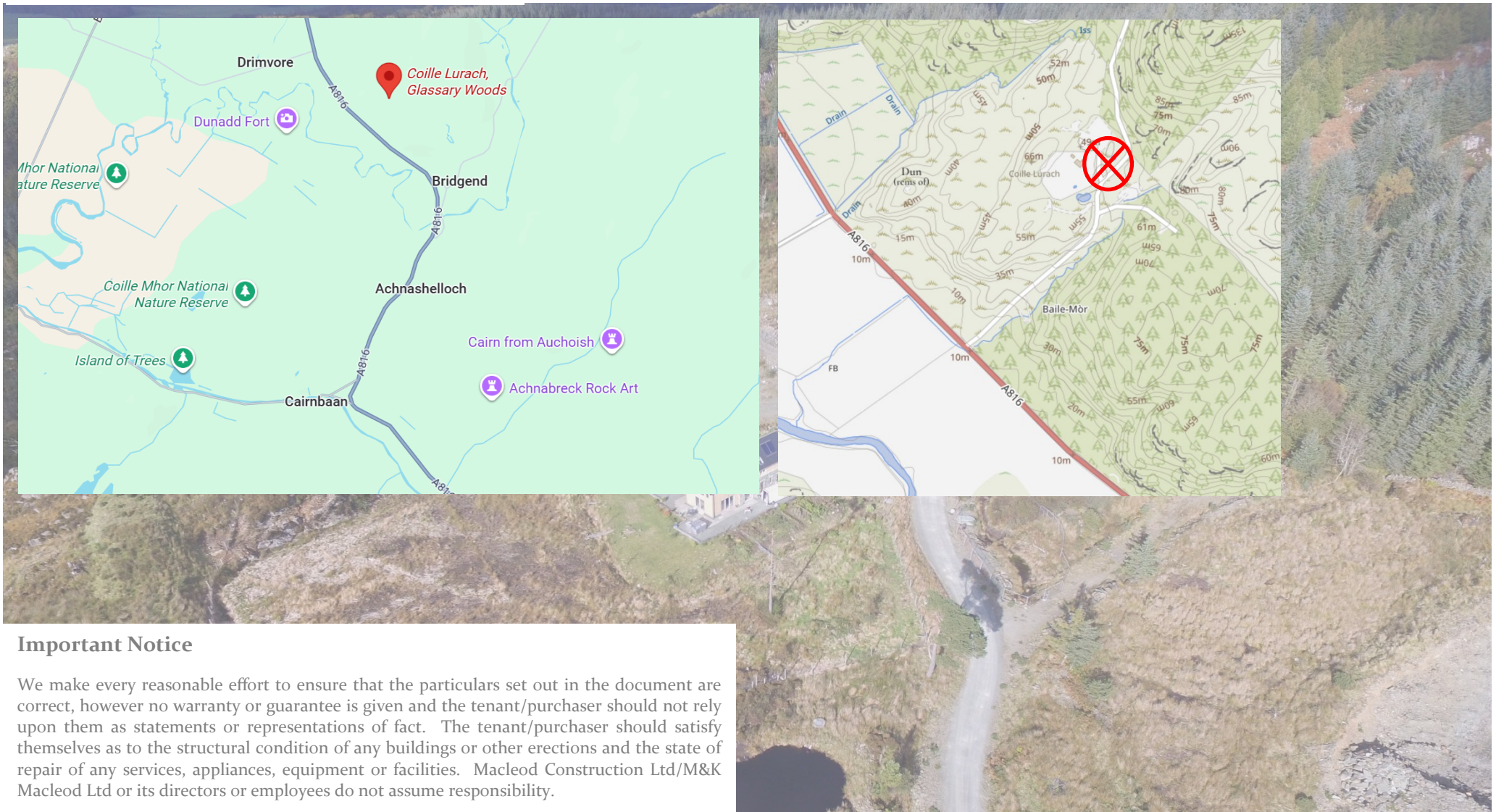
[WWW.MACLEODCONSTRUCTION.CO.UK](http://WWW.MACLEODCONSTRUCTION.CO.UK)

**MACLEOD**  
CONSTRUCTION LIMITED

# LOCATION

A816, Kilmichael, PA31 8QA

///keep.clouding.enlighten



## Important Notice

We make every reasonable effort to ensure that the particulars set out in the document are correct, however no warranty or guarantee is given and the tenant/purchaser should not rely upon them as statements or representations of fact. The tenant/purchaser should satisfy themselves as to the structural condition of any buildings or other erections and the state of repair of any services, appliances, equipment or facilities. Macleod Construction Ltd/M&K Macleod Ltd or its directors or employees do not assume responsibility.

Email: [sales@mkmacleod.co.uk](mailto:sales@mkmacleod.co.uk)  
Telephone Number: (01546) 602989

[WWW.MACLEODCONSTRUCTION.CO.UK](http://WWW.MACLEODCONSTRUCTION.CO.UK)

**MACLEOD**  
CONSTRUCTION LIMITED